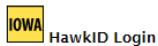


This document explains how to install and authorize ArcGIS for Desktop on an off-network computer running Windows. Any user (student, staff or faculty) who need ArcGIS for Desktop for an off-network or personal computer may request a license from [gis-help@uiowa.edu](mailto:gis-help@uiowa.edu). These licenses are for academic/educational use only and will expire annually on July 31st.

1. If you already have an installation of the ArcGIS for Desktop software, simply run the authorization file provided to you to launch the ArcGIS Administrator Wizard now.
2. If you do not have ArcGIS for Desktop installed, you can download the installer from the ITS Software Download site here: <https://helpdesk.its.uiowa.edu/software/signin.htm>. You will need to sign-in with your HawkID and password to see the download options.

### ITS Software Download Site

Welcome to the ITS Software Download site. This site provides access to a library of University of Iowa licensed applications and utilities.



Click on the sign-in button below to bring up the sign-in window. Then enter your HawkID and password in the following format:

**Username:** HawkID  
**Password:** HawkID Password

**Note:** Healthcare users should enter your HawkID and password in the following format:

**Username:** iowa\HawkID  
**Password:** HawkID Password

Sign-In

### ITS Software Downloads

This site only displays titles for which you are authorized to download, based on your status with the University (current faculty, staff, student, department, college, licensing, etc.). If you do not see a title that you believe you should have access to, please contact the [ITS Help Desk](#) for assistance. If you have a managed UI computer, contact your local support consultants or check Windows Software Center or macOS Self Service first, because the application might already be available.

[ESRI ArcGIS Desktop software](#) ←  
Mapping, analytics, and geographic data management tools.

[ESRI ArcGIS Pro](#)  
Desktop GIS application for data visualization, advanced analysis, and authoritative data maintenance.

## ESRI ArcGIS Desktop

Mapping, analytics, and geographic data management tools.

Type of License: Site

Obtain a License: [GIS-help@uiowa.edu](mailto:GIS-help@uiowa.edu)

Eligibility: Faculty, Staff, Students

Access Control Group(s): Current-UI-People

Restrictions: For use on personally owned devices for UI academic/educational use only, not available for administrative use.

**Note:** This is just the ArcGIS Desktop installer. You can download that here, but the software will not work without an ArcGIS Desktop license, which must be obtained from through the GIS program at the email address provided above.

Support: <http://support.esri.com/en/>

### Windows

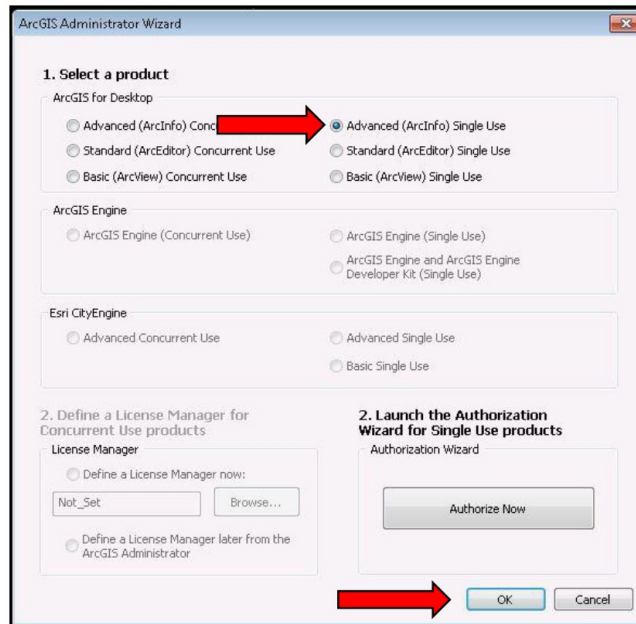
ArcGIS Desktop (ArcView, ArcEditor, ArcInfo)

**Installation Note:** For off-network installations please see the section on obtaining a license here: <https://gis.sites.uiowa.edu/help>

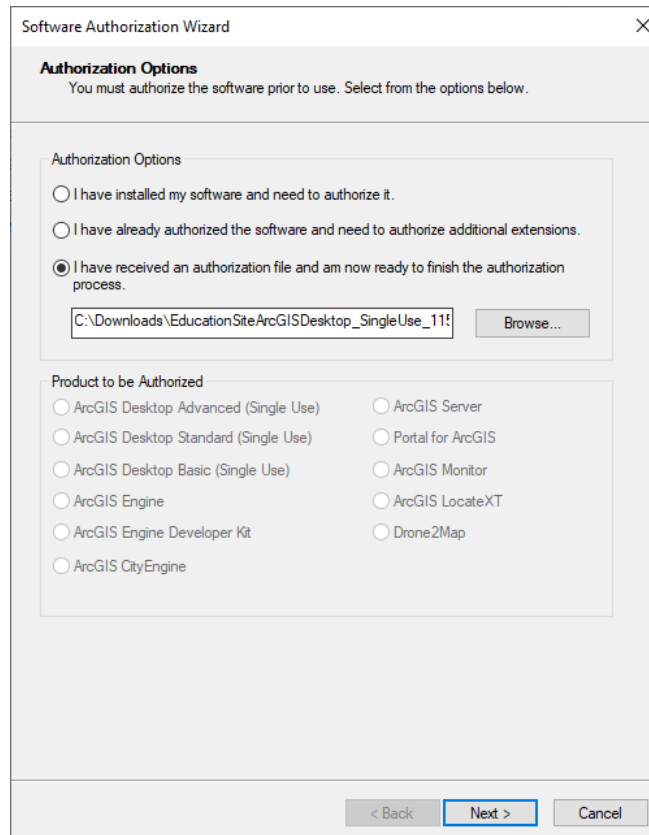
ArcGIS Desktop 10.8.2



3. Install ArcGIS for Desktop. Open the downloaded installer to launch setup for ArcGIS for Desktop
  - a. Click Next, check the radio button to accept the license agreement and click Next.
  - b. Select the radio button next to Complete in the Installation Type window and click Next.
  - c. Leave the default destination folder for ArcGIS and click Next.
  - d. Leave the default destination folder for Python and click Next.
  - e. Click Install to begin installing ArcGIS for Desktop.
  - f. Click Finish once the installation is complete.
4. Once installed, the ArcGIS Administrator Wizard should appear, if it does not, skip to step #8.
5. In the ArcGIS Administrator Wizard window, check the radio button for **Advanced (ArcInfo) Single Use and** then click **Authorize Now**.



6. In the Software Authorization Window, check the radio button for I have received an authorization file from Esri and am now ready to finish the authorization process.



7. Check the radio button for **Authorize with Esri now using the Internet**. Make sure you have a working network connection and click **Next**.
8. Enter the requested information in the Authorization Information window and click **Next**
9. Enter the requested info (if you are a student, please select student from the “Yourself” dropdown). Click **Next**.
10. Your authorization number should auto-populate from the activation file you specified earlier. Click **Next**.

The screenshot shows a window titled "Software Authorization Wizard" with a close button (X) in the top right corner. The main content area is titled "Software Authorization Number" and contains the instruction "Enter the authorization number for your software product." Below this, a note states: "The authorization number consists of three letters and a series of numbers; similar to ABC123456789." Underneath, the text "ArcGIS Desktop Advanced (Single Use)" is displayed above a text input field. At the bottom of the window, there are three buttons: "< Back" (highlighted with a blue border), "Next >" (disabled), and "Cancel" (disabled).

11. Check the radio button for **I do not wish to authorize any extensions at this time** and click **Next**.
12. In the **Evaluate Software Extensions** window, leave all extensions in the **Available Extensions** column and click **Next**.

The image shows two side-by-side screenshots of the ArcGIS Software Authorization dialog boxes.

**Left Window: Authorize Software Extensions**

**Authorize Software Extensions**  
Please select an option below.

Options

- I do not want to authorize any extensions at this time.
- I have authorization number(s) to authorize one or more extensions.

Extensions

Feature	Authorization Number
3D Analyst	
Spatial Analyst	
Network Analyst	
Publisher	
Data Interoperability	
Geostatistical Analyst	
Tracking Analyst	
Schematics	
Full Motion Video	
Workflow Manager	
Data Reviewer	

< Back   **Next >**   Cancel

**Right Window: Evaluate Software Extensions**

**Evaluate Software Extensions**

You have not provided authorization information for one or more of the ArcGIS Desktop extensions. If you would like to try an evaluation copy of an extension listed below, select the desired extension and add it to the evaluation list.

Available Extensions

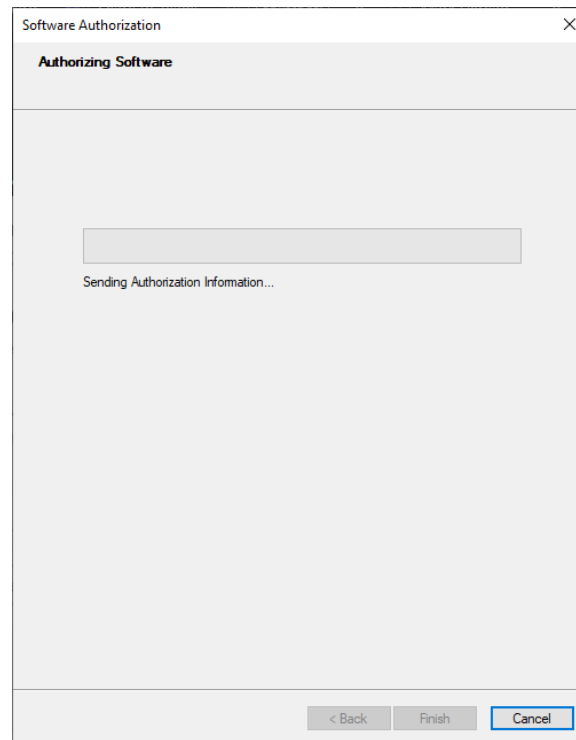
- 3D Analyst
- Data Interoperability
- Data Reviewer
- Full Motion Video
- Geostatistical Analyst
- Network Analyst
- Publisher
- Schematics
- Spatial Analyst
- Tracking Analyst
- Workflow Manager

Evaluation Extensions

Note: If you have previously authorized any of these extensions, additional evaluations cannot be provided.

< Back   **Next >**   Cancel

13. Once your software has been authorized by Esri, click **Finish**.



14. If you successfully installed the software but were unable to activate, please return to step 1 and attempt to run the license file as indicated there.